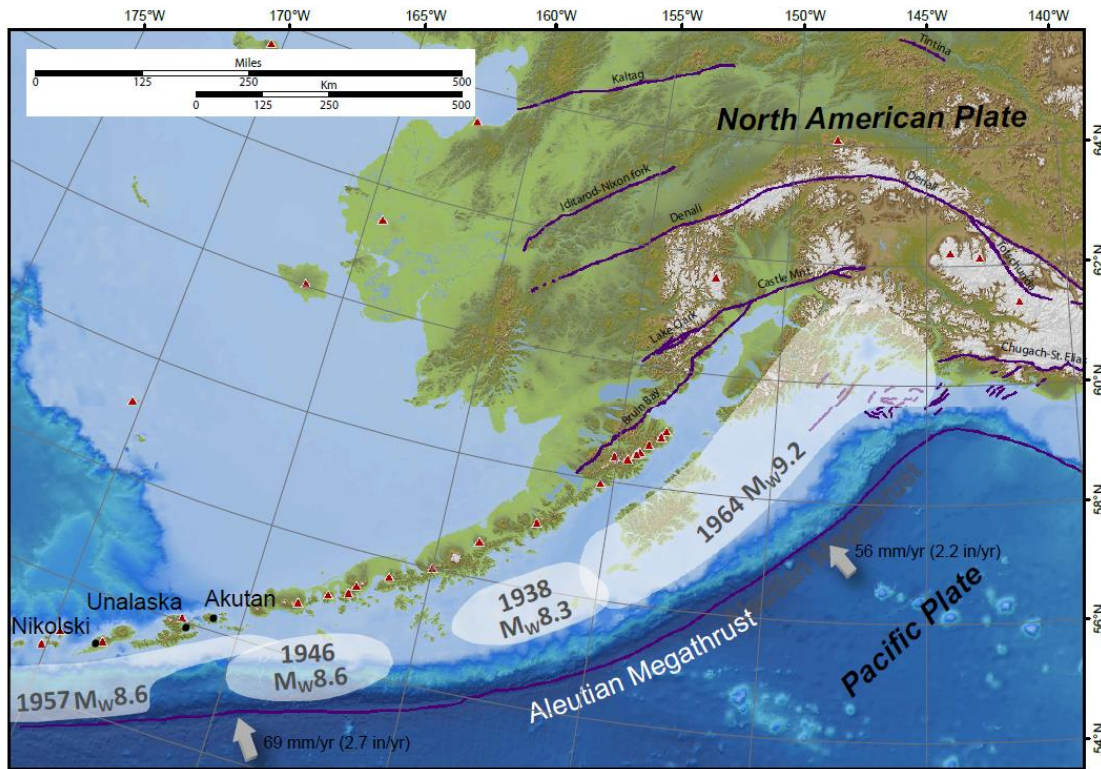


Tsunami Hazard Mitigation Products

Dmitry Nicolsky¹, Elena Suleimani¹, Richard Koehler²,

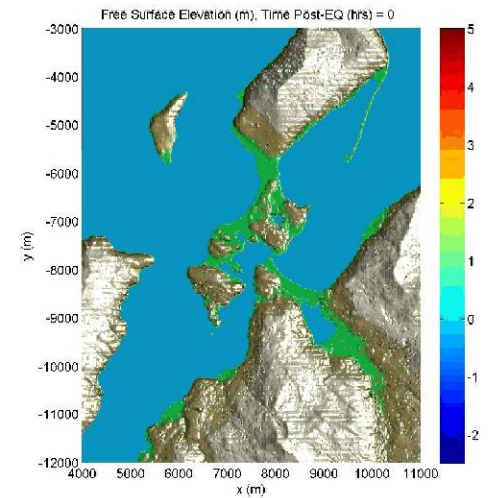
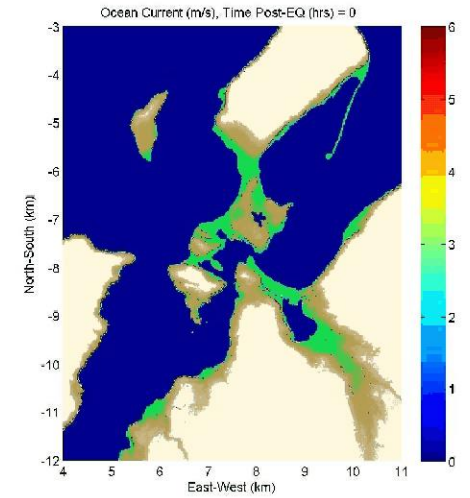
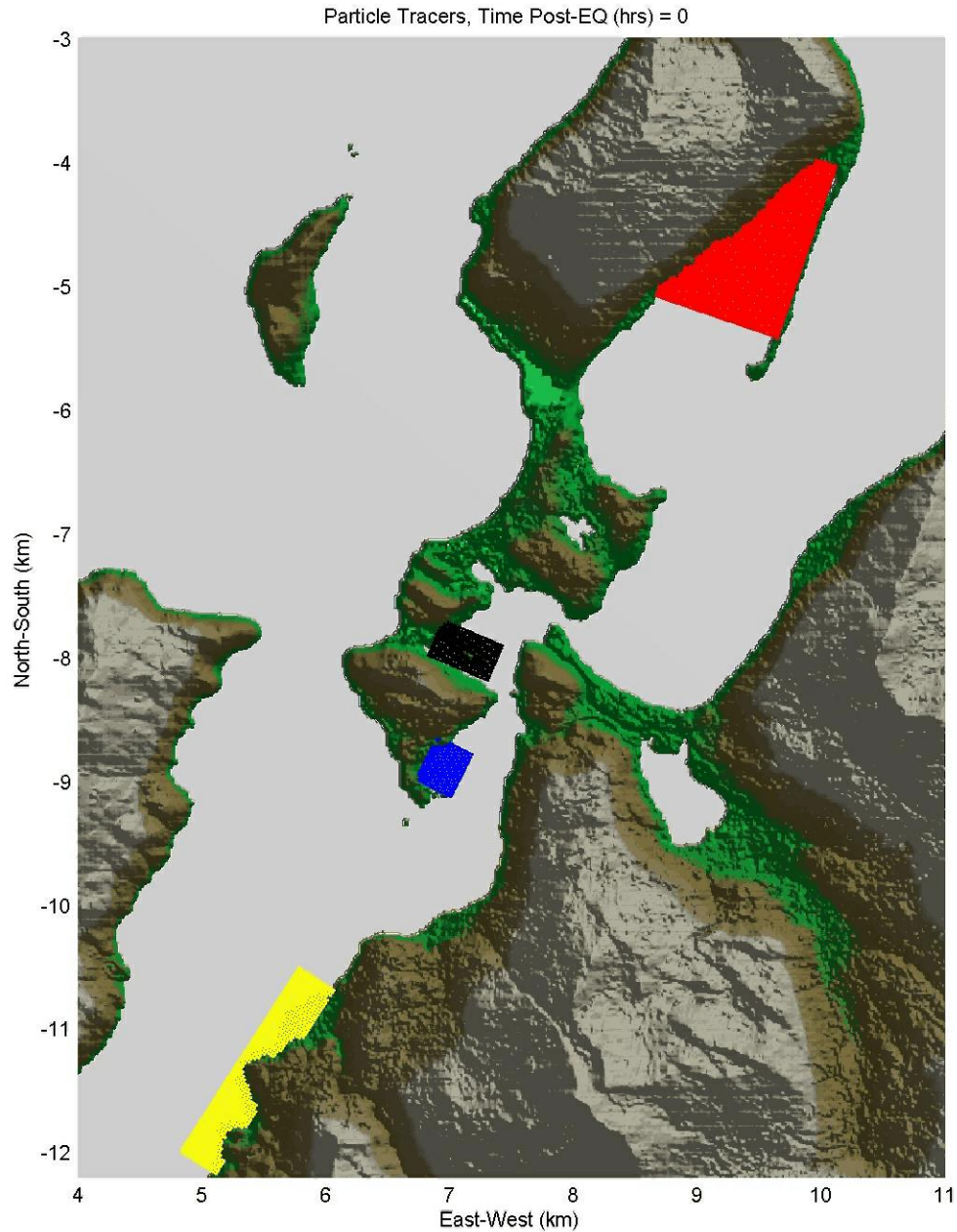


- ¹ Alaska Earthquake Center, Geophysical Institute, University of Alaska, Fairbanks,
- ² Alaska Division of Geological & Geophysical Surveys, Fairbanks



May, 2017

Potential impact of a M_w 9.2 earthquake to Dutch Harbor



Maximum current **LOCAL** scenarios

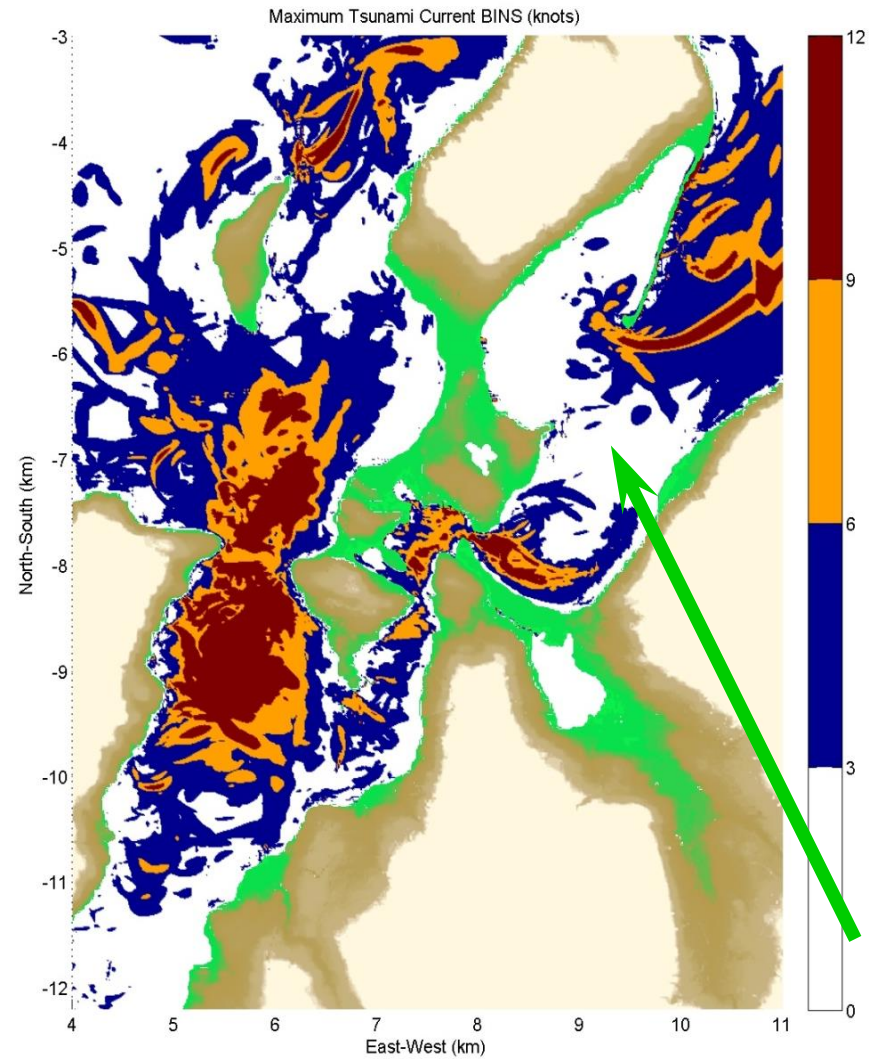
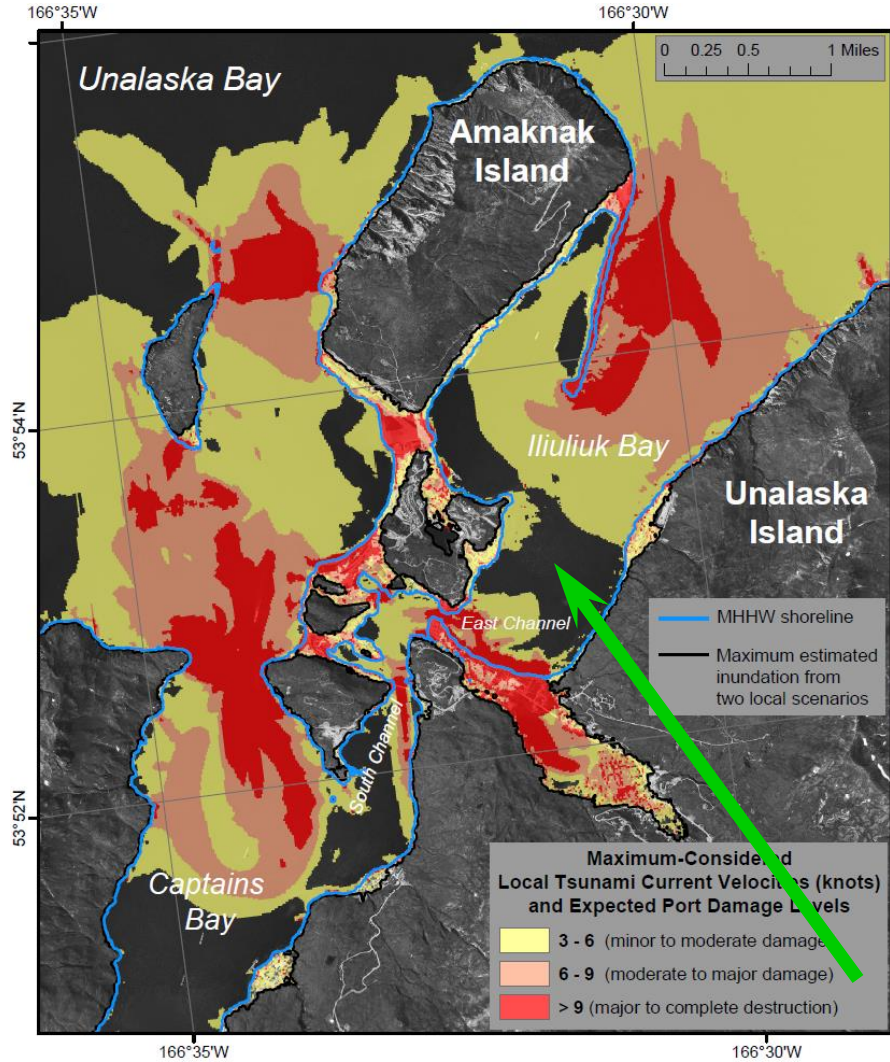


FIGURE 6B in (Nicolosky and other, 2017)

Courtesy of P. Lynett, 2017; Funded by USGS

Maximum tsunami currents and expected port damage for the DISTANT source tsunami

Results are based on modeling a maximum-considered DISTANT tsunami (Cascadia M_w 9.0 Scenario & Kuril-Kamchatka)

FIGURE 2A in (Nicolosky and other, 2017)

